

Presentation of results

Presentation of results	
Course name: Respiratory system	course code: RESP-314
Total number of students:44	Passed: 40, Failed: 03, Absent:01
Number of students appeared:43	

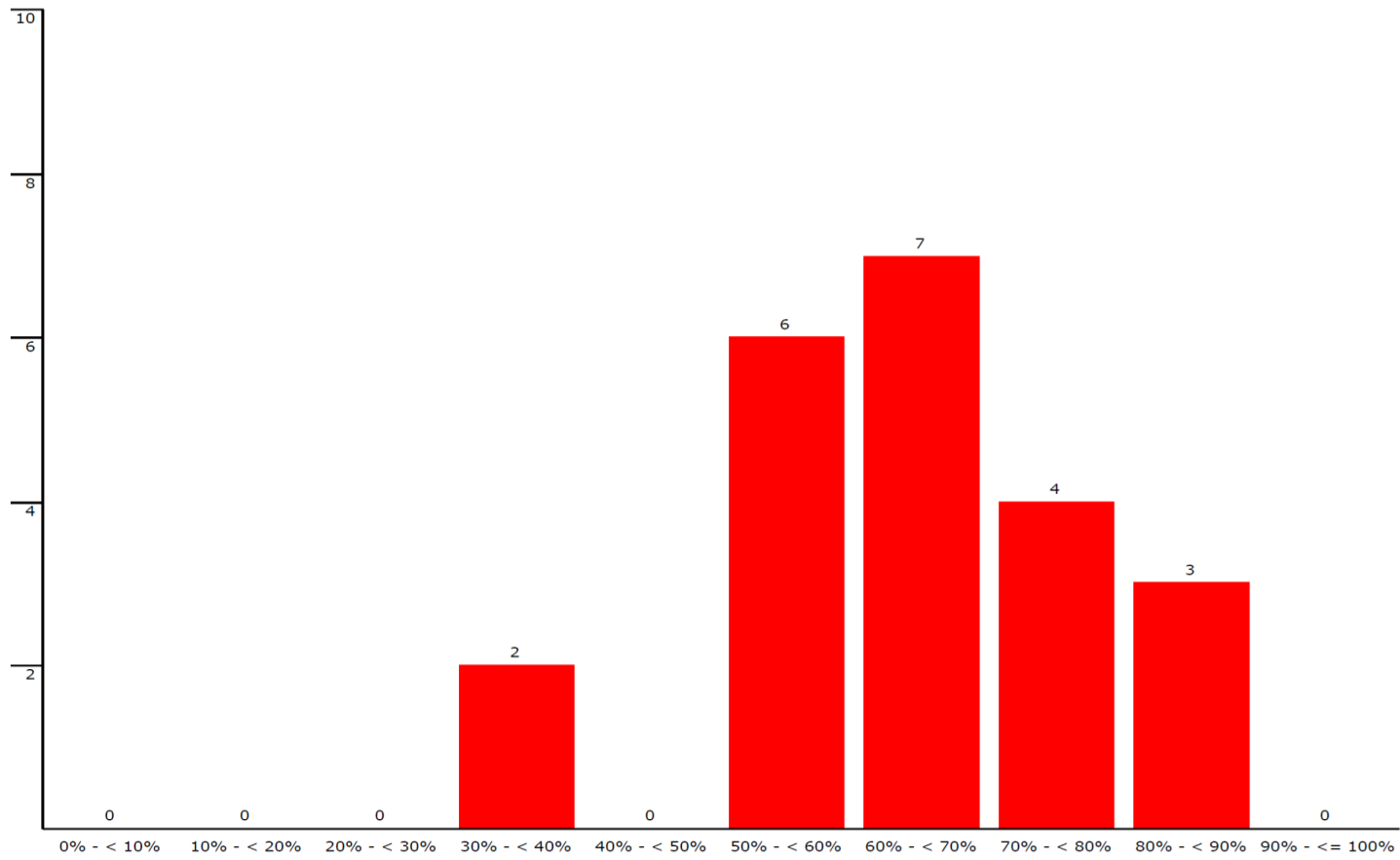
**Result summary:**

Total students : 22

KR20: 0.799

## MCQs histogram

High Score: 87.8% Low Score: 34.7% Median: 65.3% Mean: 65.0%



Screen shots of Item analysis

**ExamItem Analysis Report** **Exams Graded: 22**

Instructor:	Total Possible: 49	Class Average: 31.9 - 65.03%
Exam Name:	Highest Score: 43 - 87.76%	Class Median: 32.0 - 65.31%
Exam Date: 22/□□□□ □□□□□□/1439	Lowest Score: 17 - 34.69%	Cronbach's Alpha: 0.799
Class ID:		

Correct answers are shown in bold and italics					Blanks	Multiples	Point Biserial	Correct	Percent Incorrect
Q 1	A (0, 0.0%)	B (3, 13.6%)	<b><i>C (19, 86.4%)</i></b>	D (0, 0.0%)			0.64	19, 86.4%	<div style="width: 13.6%; background-color: #90EE90; border: 1px solid black;"></div> 13.6%
Q 2	A (3, 13.6%)	B (2, 9.1%)	<b><i>C (17, 77.3%)</i></b>	D (0, 0.0%)			0.04	17, 77.3%	<div style="width: 22.7%; background-color: #90EE90; border: 1px solid black;"></div> 22.7%
Q 4	<b><i>A (9, 40.9%)</i></b>	B (4, 18.2%)	C (1, 4.5%)	D (8, 36.4%)			0.10	9, 40.9%	<div style="width: 59.1%; background-color: #90EE90; border: 1px solid black;"></div> 59.1%
Q 5	<b><i>A (20, 90.9%)</i></b>	B (1, 4.5%)	C (0, 0.0%)	D (1, 4.5%)			0.68	20, 90.9%	<div style="width: 9.1%; background-color: #90EE90; border: 1px solid black;"></div> 9.1%
Q 6	A (1, 4.5%)	B (1, 4.5%)	C (0, 0.0%)	<b><i>D (20, 90.9%)</i></b>			0.40	20, 90.9%	<div style="width: 9.1%; background-color: #90EE90; border: 1px solid black;"></div> 9.1%
Q 7	A (0, 0.0%)	B (4, 18.2%)	C (3, 13.6%)	<b><i>D (15, 68.2%)</i></b>			-0.13	15, 68.2%	<div style="width: 31.8%; background-color: #90EE90; border: 1px solid black;"></div> 31.8%
Q 8	A (0, 0.0%)	B (0, 0.0%)	<b><i>C (22, 100.0%)</i></b>	D (0, 0.0%)			0.00	22, 100.0%	<div style="width: 0.0%; background-color: #90EE90; border: 1px solid black;"></div> 0.0%
Q 9	<b><i>A (13, 59.1%)</i></b>	B (3, 13.6%)	C (3, 13.6%)	D (3, 13.6%)			0.52	13, 59.1%	<div style="width: 40.9%; background-color: #90EE90; border: 1px solid black;"></div> 40.9%
Q 10	A (1, 4.5%)	B (2, 9.1%)	C (6, 27.3%)	<b><i>D (13, 59.1%)</i></b>			0.48	13, 59.1%	<div style="width: 40.9%; background-color: #90EE90; border: 1px solid black;"></div> 40.9%
Q 11	<b><i>A (14, 63.6%)</i></b>	B (3, 13.6%)	C (2, 9.1%)	D (3, 13.6%)			0.33	14, 63.6%	<div style="width: 36.4%; background-color: #90EE90; border: 1px solid black;"></div> 36.4%
Q 12	A (3, 13.6%)	<b><i>B (17, 77.3%)</i></b>	C (1, 4.5%)	D (1, 4.5%)			0.46	17, 77.3%	<div style="width: 22.7%; background-color: #90EE90; border: 1px solid black;"></div> 22.7%
Q 13	<b><i>A (12, 54.5%)</i></b>	B (7, 31.8%)	C (0, 0.0%)	D (3, 13.6%)			0.49	12, 54.5%	<div style="width: 45.5%; background-color: #90EE90; border: 1px solid black;"></div> 45.5%
Q 14	A (2, 9.1%)	<b><i>B (18, 81.8%)</i></b>	C (1, 4.5%)	D (1, 4.5%)			-0.01	18, 81.8%	<div style="width: 18.2%; background-color: #90EE90; border: 1px solid black;"></div> 18.2%
Q 15	<b><i>A (9, 40.9%)</i></b>	B (3, 13.6%)	C (10, 45.5%)	D (0, 0.0%)			0.01	9, 40.9%	<div style="width: 59.1%; background-color: #90EE90; border: 1px solid black;"></div> 59.1%
Q 16	A (0, 0.0%)	B (0, 0.0%)	C (0, 0.0%)	<b><i>D (22, 100.0%)</i></b>			0.00	22, 100.0%	<div style="width: 0.0%; background-color: #90EE90; border: 1px solid black;"></div> 0.0%
Q 17	<b><i>A (21, 95.5%)</i></b>	B (0, 0.0%)	C (1, 4.5%)	D (0, 0.0%)			0.06	21, 95.5%	<div style="width: 4.5%; background-color: #90EE90; border: 1px solid black;"></div> 4.5%
Q 18	<b><i>A (11, 50.0%)</i></b>	B (3, 13.6%)	C (8, 36.4%)	D (0, 0.0%)			0.36	11, 50.0%	<div style="width: 50.0%; background-color: #90EE90; border: 1px solid black;"></div> 50.0%
Q 19	A (2, 9.1%)	<b><i>B (19, 86.4%)</i></b>	C (0, 0.0%)	D (1, 4.5%)			0.08	19, 86.4%	<div style="width: 13.6%; background-color: #90EE90; border: 1px solid black;"></div> 13.6%
Q 20	<b><i>A (10, 45.5%)</i></b>	B (5, 22.7%)	C (7, 31.8%)	D (0, 0.0%)			0.23	10, 45.5%	<div style="width: 54.5%; background-color: #90EE90; border: 1px solid black;"></div> 54.5%
Q 21	A (6, 27.3%)	B (9, 40.9%)	C (3, 13.6%)	<b><i>D (4, 18.2%)</i></b>			0.13	4, 18.2%	<div style="width: 81.8%; background-color: #90EE90; border: 1px solid black;"></div> 81.8%
Q 22	A (4, 18.2%)	<b><i>B (11, 50.0%)</i></b>	C (4, 18.2%)	D (3, 13.6%)			-0.08	11, 50.0%	<div style="width: 50.0%; background-color: #90EE90; border: 1px solid black;"></div> 50.0%
Q 23	<b><i>A (7, 31.8%)</i></b>	B (9, 40.9%)	C (3, 13.6%)	D (3, 13.6%)			0.00	7, 31.8%	<div style="width: 68.2%; background-color: #90EE90; border: 1px solid black;"></div> 68.2%
Q 24	<b><i>A (17, 77.3%)</i></b>	B (2, 9.1%)	C (2, 9.1%)	D (1, 4.5%)			0.57	17, 77.3%	<div style="width: 22.7%; background-color: #90EE90; border: 1px solid black;"></div> 22.7%
Q 25	A (3, 13.6%)	<b><i>B (10, 45.5%)</i></b>	C (3, 13.6%)	D (6, 27.3%)			0.23	10, 45.5%	<div style="width: 54.5%; background-color: #90EE90; border: 1px solid black;"></div> 54.5%
Q 26	A (2, 9.1%)	<b><i>B (12, 54.5%)</i></b>	C (4, 18.2%)	D (4, 18.2%)			0.35	12, 54.5%	<div style="width: 45.5%; background-color: #90EE90; border: 1px solid black;"></div> 45.5%
Q 27	<b><i>A (15, 68.2%)</i></b>	B (2, 9.1%)	C (4, 18.2%)	D (1, 4.5%)			0.54	15, 68.2%	<div style="width: 31.8%; background-color: #90EE90; border: 1px solid black;"></div> 31.8%
Q 28	A (1, 4.5%)	B (1, 4.5%)	C (3, 13.6%)	<b><i>D (17, 77.3%)</i></b>			0.34	17, 77.3%	<div style="width: 22.7%; background-color: #90EE90; border: 1px solid black;"></div> 22.7%

## ExamItem Analysis Report

Exams Graded: 22

Instructor:  
Exam Name:  
Exam Date: 22/□□□□ □□□□□□/1439  
Class ID:

Total Possible: 49  
Highest Score: 43 - 87.76%  
Lowest Score: 17 - 34.69%

Class Average: 31.9 - 65.03%  
Class Median: 32.0 - 65.31%  
Cronbach's Alpha: 0.799

Correct answers are shown in bold and italics					Blanks	Multiples	Point Biserial	Correct	Percent Incorrect
Q 29	A (9, 40.9%)	<b><i>B (11, 50.0%)</i></b>	C (1, 4.5%)	D (1, 4.5%)			0.36	11, 50.0%	<div style="width: 50.0%; background-color: #90EE90;">50.0%</div>
Q 30	A (2, 9.1%)	B (3, 13.6%)	C (1, 4.5%)	<b><i>D (16, 72.7%)</i></b>			0.17	16, 72.7%	<div style="width: 27.3%; background-color: #90EE90;">27.3%</div>
Q 31	A (2, 9.1%)	<b><i>B (8, 36.4%)</i></b>	C (5, 22.7%)	D (7, 31.8%)			-0.20	8, 36.4%	<div style="width: 63.6%; background-color: #90EE90;">63.6%</div>
Q 32	<b><i>A (19, 86.4%)</i></b>	B (0, 0.0%)	C (1, 4.5%)	D (2, 9.1%)			0.66	19, 86.4%	<div style="width: 13.6%; background-color: #90EE90;">13.6%</div>
Q 33	<b><i>A (9, 40.9%)</i></b>	B (9, 40.9%)	C (0, 0.0%)	D (4, 18.2%)			0.11	9, 40.9%	<div style="width: 59.1%; background-color: #90EE90;">59.1%</div>
Q 34	A (1, 4.5%)	B (3, 13.6%)	<b><i>C (17, 77.3%)</i></b>	D (1, 4.5%)			0.48	17, 77.3%	<div style="width: 22.7%; background-color: #90EE90;">22.7%</div>
Q 35	A (0, 0.0%)	<b><i>B (20, 90.9%)</i></b>	C (2, 9.1%)	D (0, 0.0%)			0.45	20, 90.9%	<div style="width: 9.1%; background-color: #90EE90;">9.1%</div>
Q 36	<b><i>A (10, 45.5%)</i></b>	B (4, 18.2%)	C (3, 13.6%)	D (5, 22.7%)			0.35	10, 45.5%	<div style="width: 54.5%; background-color: #90EE90;">54.5%</div>
Q 37	A (1, 4.5%)	B (4, 18.2%)	C (4, 18.2%)	<b><i>D (12, 54.5%)</i></b>	<input checked="" type="checkbox"/>		-0.07	12, 54.5%	<div style="width: 45.5%; background-color: #90EE90;">45.5%</div>
Q 38	A (3, 13.6%)	<b><i>B (15, 68.2%)</i></b>	C (3, 13.6%)	D (1, 4.5%)			0.22	15, 68.2%	<div style="width: 31.8%; background-color: #90EE90;">31.8%</div>
Q 39	A (1, 4.5%)	B (1, 4.5%)	C (2, 9.1%)	<b><i>D (18, 81.8%)</i></b>			0.26	18, 81.8%	<div style="width: 18.2%; background-color: #90EE90;">18.2%</div>
Q 40	A (1, 4.5%)	<b><i>B (11, 50.0%)</i></b>	C (1, 4.5%)	D (9, 40.9%)			0.32	11, 50.0%	<div style="width: 50.0%; background-color: #90EE90;">50.0%</div>
Q 41	A (2, 9.1%)	B (6, 27.3%)	C (2, 9.1%)	<b><i>D (12, 54.5%)</i></b>			0.06	12, 54.5%	<div style="width: 45.5%; background-color: #90EE90;">45.5%</div>
Q 42	A (5, 22.7%)	B (5, 22.7%)	<b><i>C (7, 31.8%)</i></b>	D (5, 22.7%)			0.02	7, 31.8%	<div style="width: 68.2%; background-color: #90EE90;">68.2%</div>
Q 43	A (0, 0.0%)	B (1, 4.5%)	<b><i>C (21, 95.5%)</i></b>	D (0, 0.0%)			0.44	21, 95.5%	<div style="width: 4.5%; background-color: #90EE90;">4.5%</div>
Q 44	<b><i>A (5, 22.7%)</i></b>	B (4, 18.2%)	C (6, 27.3%)	D (7, 31.8%)			0.01	5, 22.7%	<div style="width: 77.3%; background-color: #90EE90;">77.3%</div>
Q 45	A (2, 9.1%)	B (2, 9.1%)	<b><i>C (17, 77.3%)</i></b>	D (1, 4.5%)			0.23	17, 77.3%	<div style="width: 22.7%; background-color: #90EE90;">22.7%</div>
Q 46	A (5, 22.7%)	B (0, 0.0%)	<b><i>C (17, 77.3%)</i></b>	D (0, 0.0%)			0.57	17, 77.3%	<div style="width: 22.7%; background-color: #90EE90;">22.7%</div>
Q 47	<b><i>A (15, 68.2%)</i></b>	B (0, 0.0%)	C (5, 22.7%)	D (2, 9.1%)			0.36	15, 68.2%	<div style="width: 31.8%; background-color: #90EE90;">31.8%</div>
Q 48	A (1, 4.5%)	B (3, 13.6%)	C (5, 22.7%)	<b><i>D (13, 59.1%)</i></b>			0.44	13, 59.1%	<div style="width: 40.9%; background-color: #90EE90;">40.9%</div>
Q 49	<b><i>A (14, 63.6%)</i></b>	B (2, 9.1%)	C (0, 0.0%)	D (6, 27.3%)			0.15	14, 63.6%	<div style="width: 36.4%; background-color: #90EE90;">36.4%</div>
Q 50	A (0, 0.0%)	<b><i>B (20, 90.9%)</i></b>	C (1, 4.5%)	D (1, 4.5%)			0.37	20, 90.9%	<div style="width: 9.1%; background-color: #90EE90;">9.1%</div>

1. Questions having problem

<b>Item Analysis</b>	Common questions in all models
Negative point Biserial Questions	17,6
Difficulty index less than 25% (difficult)	14
Difficulty index more than 90% (easy)	2, 4

17. Which of the following viruses is the most common cause of common cold?

- A. Rhinoviruses
- B. Coronaviruses
- C. Adenoviruses
- D. Parvoviruses

Specific learning outcome: Describe the morphology, pathogenesis and laboratory diagnosis of viral infection of URTI  
 Reference... Kumar and Clark Clinical medicine 8th edition chapter 15 page 808 – 811. And 108--110

17	Response	A	A	B	C	D
	<b>Count</b>	21	21	0	1	0
	<b>%</b>	95.45%	95.45%	0.00%	4.55%	0.00%
	<b>Upper Count</b>	6	6	0	0	0
	<b>Lower Count</b>	5	5	0	0	0
	<b>Pt. Biseriall</b>	0.00	0.00	0.00	-0.12	0.00
	<b>Question Pt. Biseriall</b>	0.06		<b>Disc. Index</b>	0.00	
	<b>No. Correct:</b>	21	95.45%	<b>No. Incorrect:</b>	1	4.55%

5. Which of the following best describes the function of external intercostal muscles?

- A. Elevate the ribs during inspiration
- B. Depress the ribs during expiration
- C. Elevate the ribs during expiration
- D. Depress the ribs during inspiration

SLO: Describe the thoracic wall and its innervation  
 Reference: Clinical anatomy by regions. 9th edition, Richard Snell,

5	Response	A	A	B	C	D
	Count	20	20	1	0	1
	%	90.91%	90.91%	4.55%	0.00%	4.55%
	Upper Count	6	6	0	0	0
	Lower Count	3	3	1	0	1
	Pt. Biseriall	0.06	0.06	-0.66	0.00	-0.71
	Question Pt. Biseriall	0.68		Disc. Index	0.40	
	No. Correct:	20	90.91%	No. Incorrect:	2	9.09%

35. A 60-year-old male presented with severe, persistent cough, expectoration of foul smelling bloody sputum and orthopnea. Paroxysms of cough are particularly frequent when the patient rises in the morning.

What is the provisional diagnosis?

- A. Pneumothorax
- B. Bronchiectasis**
- C. Lung fibrosis
- D. Lung cancer

SLO: Provide the provisional diagnoses of bronchiectasis, lung fibrosis.

Reference: Robbin and Cotran Pathological basis of disease 9th edition Chapter 8 page 371-377 and chapter 15, page 683-684

35	Response	B	A	B	C	D
	Count	20	0	20	2	0
	%	90.91%	0.00%	90.91%	9.09%	0.00%
	Upper Count	6	0	6	0	0
	Lower Count	3	0	3	2	0
	Pt. Biseriall	0.04	0.00	0.04	-0.48	0.00
	Question Pt. Biseriall	0.45		Disc. Index	0.40	
	No. Correct:	20	90.91%	No. Incorrect:	2	9.09%

**Result details (student wise) overall**

S.No.	University ID	Student's name	Midcourse 20	percentage
1.	435821786	ABDALRAHMAN ALI SAAD ALQARNI		
2.	436800007	ABDULAZIZ MOHAMMED M ALSHAHRANI		
3.	435823173	ABDULAZIZ SAUD N ASHAHRANI		
4.	435800058	ABDULLAH ALI A BUHRAN		
5.	436800015	ABDULLAH OMAR A ALSAEERI		
6.	436803921	ABDULLAH SAEED A ALAHMARI		
7.	435800796	ABDULLMJEED ABDULLRAHMAN A ALSHA		
8.	436800003	ABDULLRAHMAN SAAD F ALSHAHRANI		
9.	435800496	ABDULRAHMAN AHMAD M ASIRI		
10.	435800759	AHMAD ATTIYAH A ALGHAMDI		
11.	434822478	AMER MUBARAK A ALQAHTANI		
12.	436800012	AMJD MOHAMMED G ALKALTHMI		
13.	436800002	ANAS KHALID A ALQARNI		
14.	435803453	AZIZ GARMAN M ALSUBAIE		
15.	435800440	DHAFER AHMED J ALSHEHRI		
16.	436800005	FAISAL ABDULLAH A ALSHEHRI		
17.	435819158	FARIS THEYAB M ALAMRI		
18.	435803080	FAWAZ MAHDI S ALAWAD		
19.	435821465	HASAN AMER A ALSUIRI		

20.	436800983	HOSSAM HASSAN A ASIRI		
21.	435821582	JALWY ABDULRAHMAN M K		
22.	436800277	KHALID ABDULLAH M ALGHAMDI		
23.	436803944	KHALID ALI Z ALHARTHI		
24.	436800014	MAJED SHERIAA M ALSHAHRANI		
25.	436800017	MISHARI AMER M ALSAIRY		
26.	436800274	MOHAMMAD MEHMAS B AL SWEDANI		
27.	436803917	MOHAMMAD MESHARY M ALHARTHY		
28.	436800825	MOHAMMED ABDULLAH M ALQARNI		
29.	436800343	MOHAMMED ALI M ALQARNI		
30.	435803011	MOHAMMED ALI M ALSHEHRE		
31.	436800923	MOHANAD MISFER S ALKHATHAMI		
32.	435800819	NASSER ABDULLAH F ALGHMI		
33.	435800544	NAWAF IBRAHIM A ALMANI		
34.	435807780	NAWWAF AHMED H MUDDI		
35.	435802992	OSAMA MURAYAH A ALQAHTANI		
36.	435823159	RAED GORMALLAH D ALALYANI		
37.	435800738	RAJEH OMAR R ALAKLOBI		
38.	436800008	SAAD HADER S ALHARTHI		
39.	435803856	SAEED AUDAH S ALASSIRI		
40.	435802958	SAEED HASSAN S ALSHAHRANI		
41.	436800809	SAEED SAAD S ALSHAHRANI		
42.	435800752	SAUD DHAFER M ALSHAHRANI		
43.	436800018	SULTAN SALEH A KHABTI		
44.	436806008	TORKI AWAD Y AL ZAFER ALASMARI		